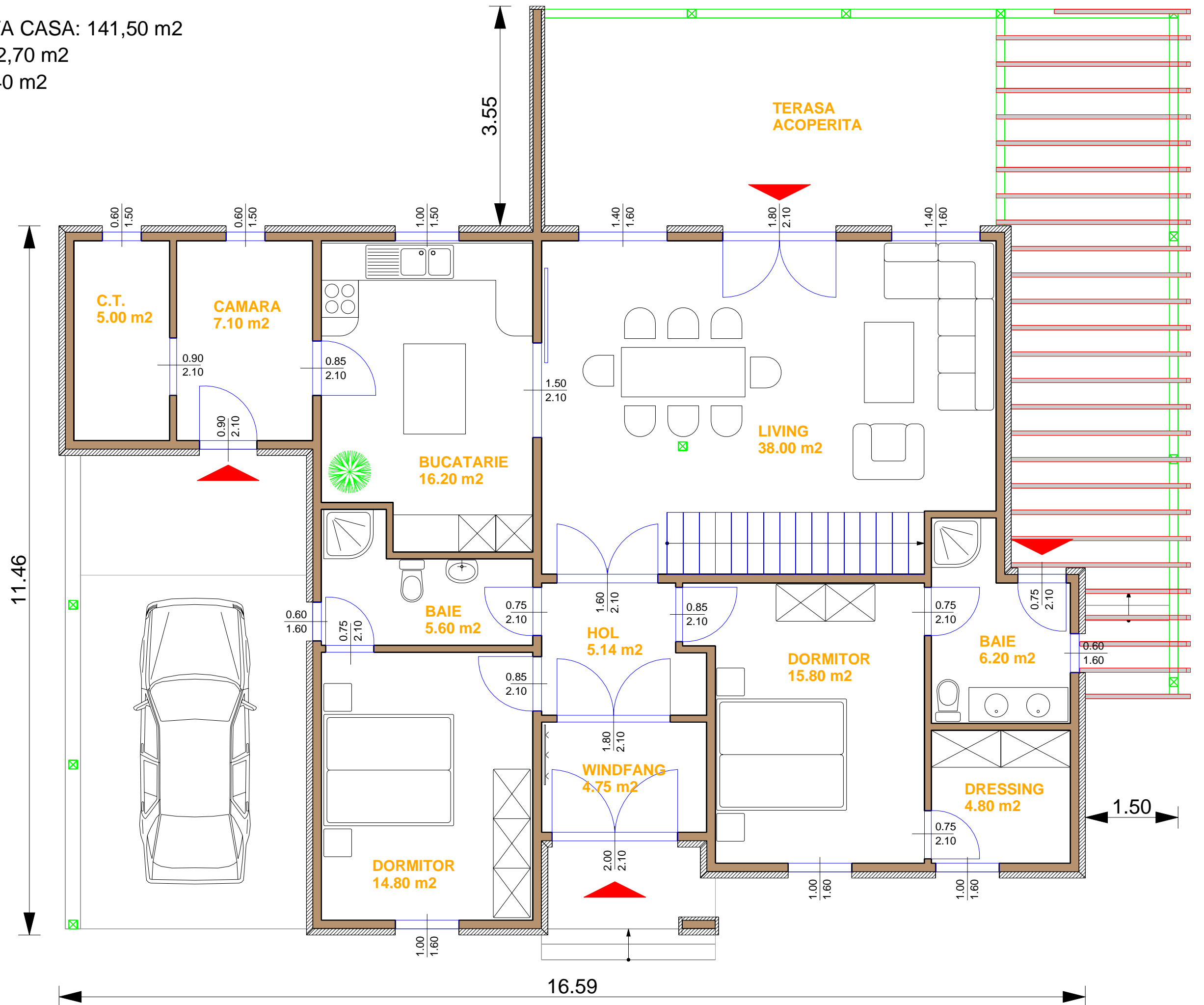


PLAN PARTER

SUPRAFATA CONSTRUITA CASA: 141,50 m²

TERASA, GARAJ, ETC.: 82,70 m²

SUPRAFATA UTILA: 123,40 m²



PLAN MANSARDA

SUPRAFATA CONSTRUITA: 128,00 m²

SUPRAFATA UTILA: 119,00 m²

